

Provisional Benchmark Analysis

Project Reference: Wiipqc8615

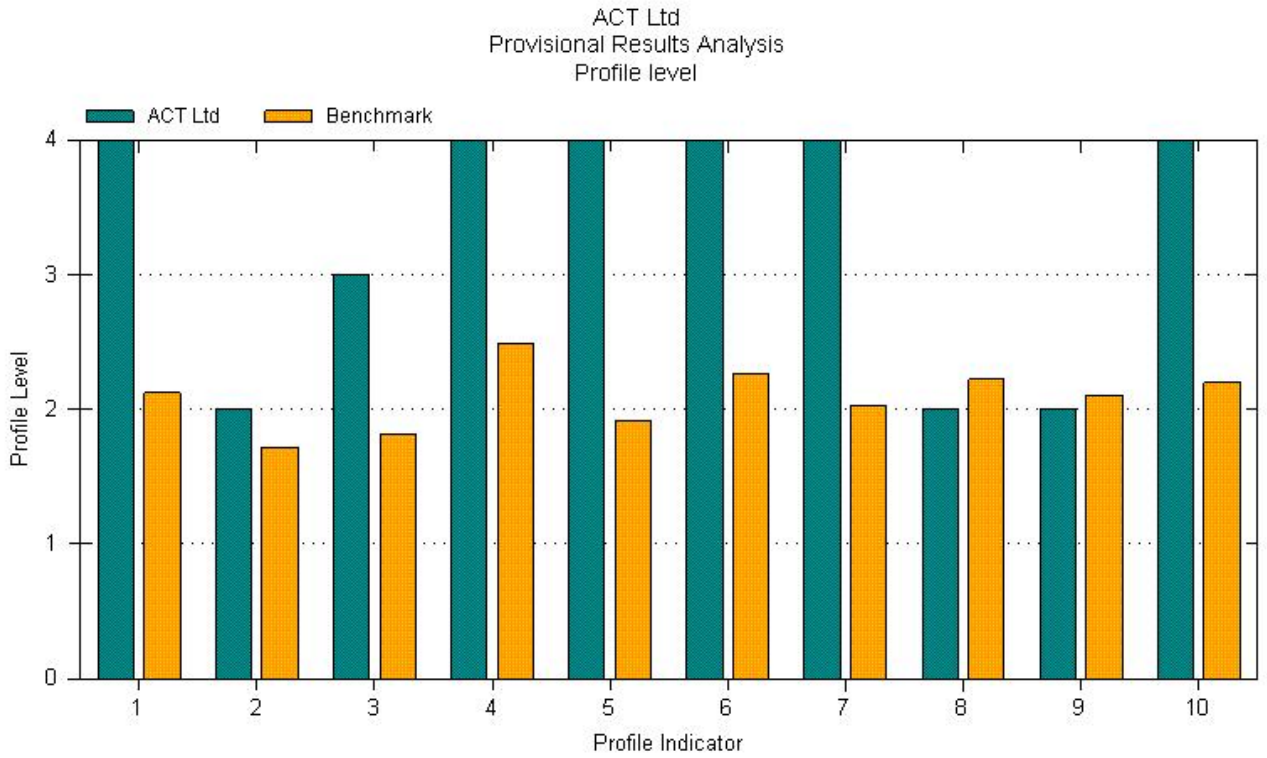
Organisation: ACT Ltd

| | | | |
|-----------------|------------------------|---------------------|-------------|
| Analysis | Profile Level Achieved | | |
| Date Period | All dates | Organisation size | All sizes |
| Industry Sector | All Industry Sectors | Geographical Region | All Regions |

Data

| Indicators | 1 | 2 | 3 | 4 | 5 | 6 | 7 | 8 | 9 | 10 |
|----------------|------|------|------|------|------|------|------|------|------|------|
| ACT Ltd | 4 | 2 | 3 | 4 | 4 | 4 | 4 | 2 | 2 | 4 |
| Benchmark Avg. | 2.12 | 1.72 | 1.81 | 2.48 | 1.91 | 2.26 | 2.03 | 2.22 | 2.11 | 2.20 |

Graph



*Benchmark group contains 356 projects

Provisional Benchmark Analysis

Project Reference: Wiipqc8615

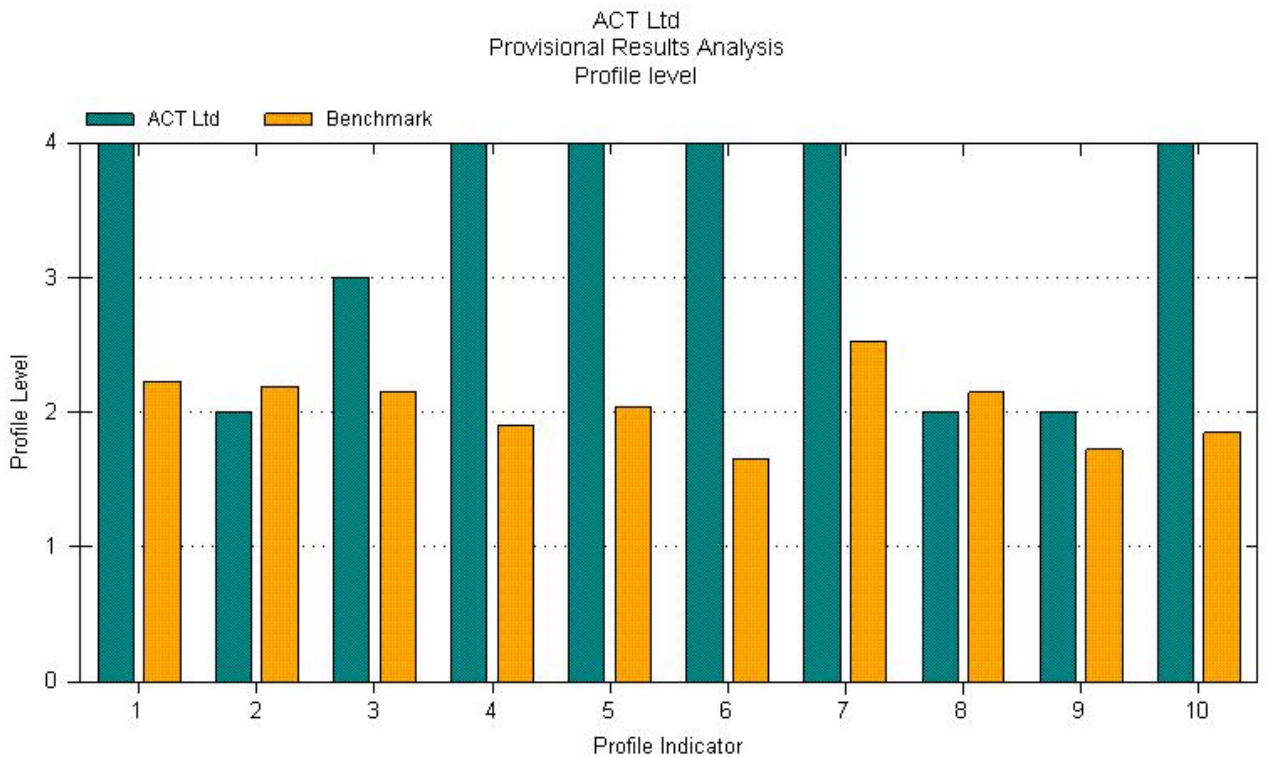
Organisation: ACT Ltd

| | | | |
|-----------------|----------------------------------|---------------------|-------------|
| Analysis | Profile Level Achieved | People in Scope | All sizes |
| Date Period | 20 Dec 2006 to 20 Dec 2007 (i... | Organisation size | All sizes |
| Industry Sector | All Industry Sectors | Geographical Region | All Regions |

Data

| Indicators | 1 | 2 | 3 | 4 | 5 | 6 | 7 | 8 | 9 | 10 |
|----------------|------|------|------|------|------|------|------|------|------|------|
| ACT Ltd | 4 | 2 | 3 | 4 | 4 | 4 | 4 | 2 | 2 | 4 |
| Benchmark Avg. | 2.23 | 2.19 | 2.16 | 1.90 | 2.04 | 1.65 | 2.53 | 2.15 | 1.73 | 1.85 |

Graph



*Benchmark group contains 135 projects